

SmarterMail

The Microsoft Exchange Alternative

EXUSG Meetup
April 29, 2021



Tim Uzzanti

CEO

tuzzanti@smartertools.com

<https://www.linkedin.com/in/timuzzanti>



Derek Curtis

COO

dcurtis@smartertools.com

<https://www.linkedin.com/in/derekrcurtis>

About SmarterTools

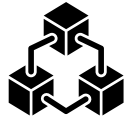


- Founded in 2003
- 15,000,000+ customers
- 120+ different countries
- Privately-held and funded
- Consistent growth and innovation
- Same ownership since our inception

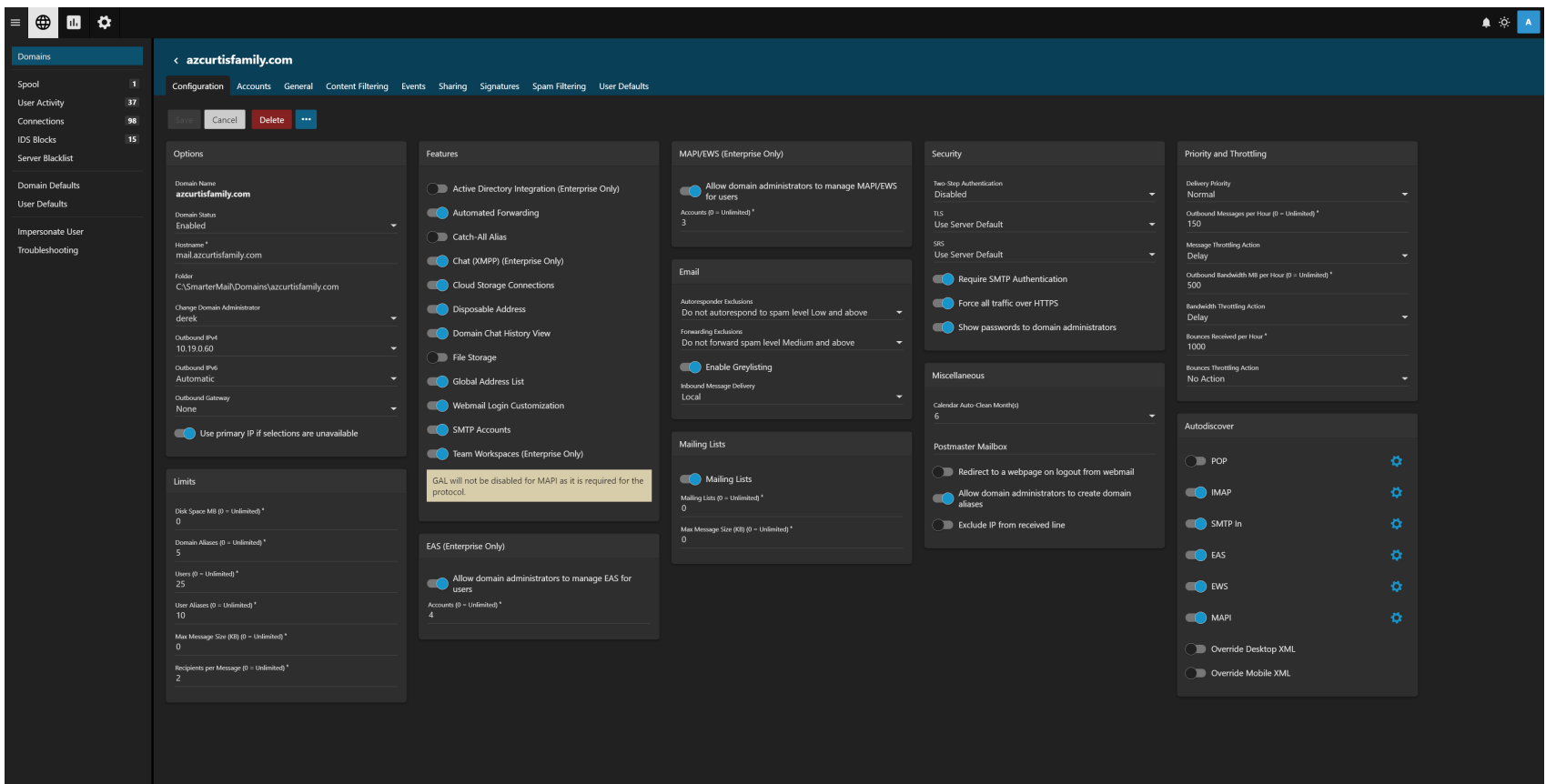


Common Exchange Complaints

- Cost (hardware and software)
- Steep learning curve
- Difficult / time consuming upgrades
- Complicated security
- Resource intensive
- Large databases and associated issues
 - ❖ (E.g., defragging databases and database corruption concerns)
- Need for PowerShell (love it and hate it)
- Hybrid is temperamental
- Limited logging
- Microsoft Support isn't what it used to be
- Slow implementation of common features (e.g., Plus Addressing)



Administration – Domain Settings

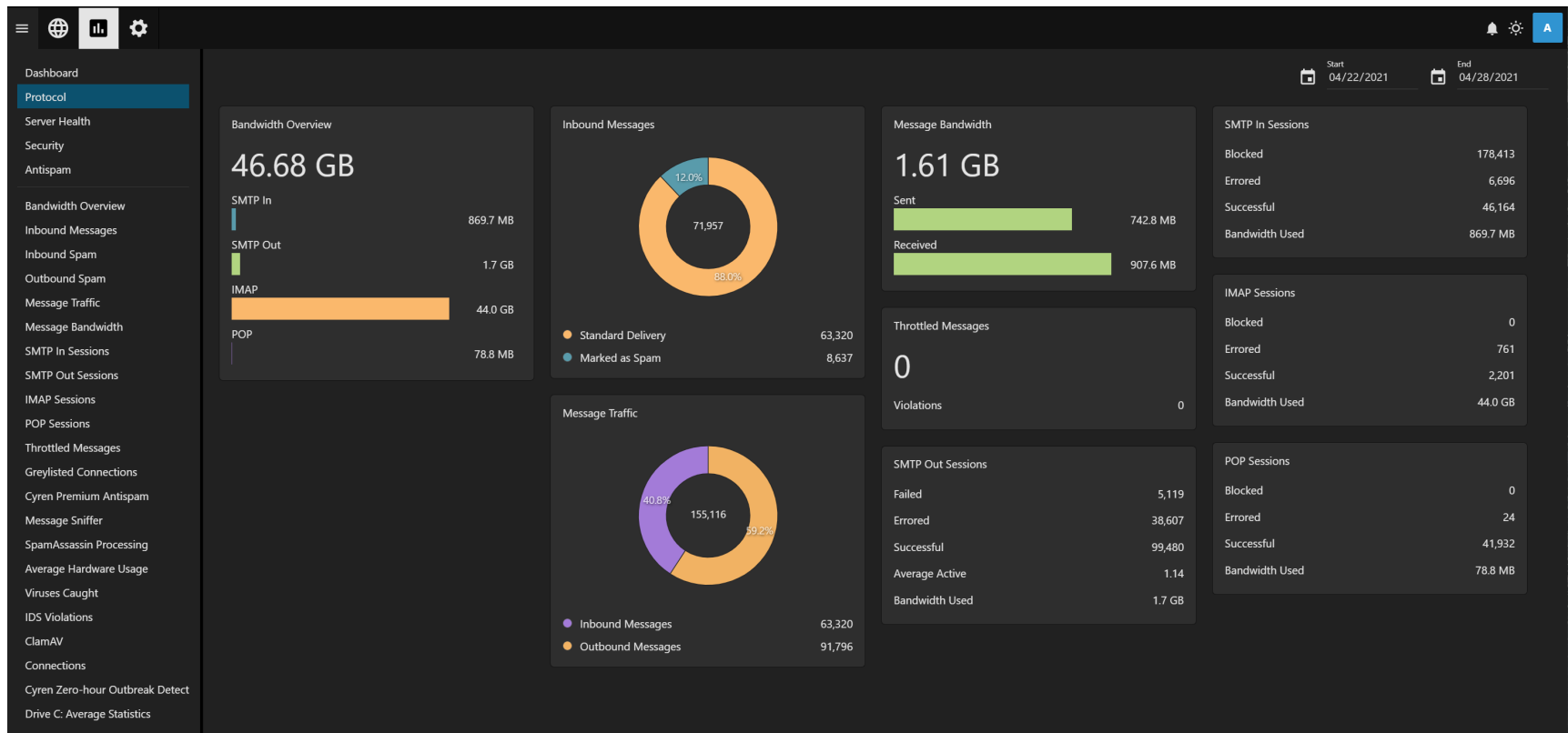


The screenshot displays the 'Domain Settings' configuration page for the domain **azcortisfamily.com**. The interface is organized into several sections:

- Left Sidebar:** Contains navigation links for Domains, Spool, User Activity, Connections, IDS Blocks, Server Blacklist, Domain Defaults, User Defaults, Impersonate User, and Troubleshooting.
- Top Navigation:** Includes tabs for Configuration, Accounts, General, Content Filtering, Events, Sharing, Signatures, Spam Filtering, and User Defaults.
- Options Section:**
 - Domain Name: **azcortisfamily.com**
 - Domain Status: **Enabled**
 - Hostname: **mail.azcortisfamily.com**
 - Folder: **C:\SmarterMail\Domains\azcortisfamily.com**
 - Change Domain Administrator: **derek**
 - Outbound IPv4: **10.19.0.60**
 - Outbound IPv6: **Automatic**
 - Outbound Gateway: **None**
 - ☒ Use primary IP if selections are unavailable
- Limits Section:**
 - Disk Space MB (0 = Unlimited): **0**
 - Domain Aliases (0 = Unlimited): **5**
 - Users (0 = Unlimited): **25**
 - User Aliases (0 = Unlimited): **10**
 - Max Message Size (KB) (0 = Unlimited): **0**
 - Recipients per Message (0 = Unlimited): **2**
- Features Section:**
 - ☐ Active Directory Integration (Enterprise Only)
 - ☒ Automated Forwarding
 - ☐ Catch-All Alias
 - ☒ Chat (XMPP) (Enterprise Only)
 - ☒ Cloud Storage Connections
 - ☒ Disposable Address
 - ☒ Domain Chat History View
 - ☐ File Storage
 - ☒ Global Address List
 - ☒ Webmail Login Customization
 - ☒ SMTP Accounts
 - ☒ Team Workspaces (Enterprise Only)
- MAP/ews (Enterprise Only) Section:**
 - ☒ Allow domain administrators to manage MAP/ews for users
 - Accounts (0 = Unlimited): **3**
- Email Section:**
 - Autoreponder Exclusions: **Do not autoreponder to spam level Low and above**
 - Forwarding Exclusions: **Do not forward spam level Medium and above**
 - ☒ Enable Greylisting
 - Inbound Message Delivery: **Local**
- Mailing Lists Section:**
 - ☒ Mailing Lists
 - Mailing Lists (0 = Unlimited): **0**
 - Max Message Size (KB) (0 = Unlimited): **0**
- EAS (Enterprise Only) Section:**
 - ☒ Allow domain administrators to manage EAS for users
 - Accounts (0 = Unlimited): **4**
- Security Section:**
 - Two-Step Authentication: **Disabled**
 - TLS: **Use Server Default**
 - SRS: **Use Server Default**
 - ☒ Require SMTP Authentication
 - ☒ Force all traffic over HTTPS
 - ☒ Show passwords to domain administrators
- Miscellaneous Section:**
 - Calendar Auto-Clean Month(s): **6**
- Postmaster Mailbox Section:**
 - ☐ Redirect to a webpage on logout from webmail
 - ☒ Allow domain administrators to create domain aliases
 - ☐ Exclude IP from received line
- Priority and Throttling Section:**
 - Delivery Priority: **Normal**
 - Outbound Messages per Hour (0 = Unlimited): **150**
 - Message Throttling Action: **Delay**
 - Outbound Bandwidth MB per Hour (0 = Unlimited): **500**
 - Bandwidth Throttling Action: **Delay**
 - Bounces Received per Hour: **1000**
 - Bounces Throttling Action: **No Action**
- Autodiscover Section:**
 - ☐ POP
 - ☒ IMAP
 - ☒ SMTP In
 - ☒ EAS
 - ☒ EWS
 - ☒ MAPI
 - ☐ Override Desktop XML
 - ☐ Override Mobile XML



Administration - Reporting





Administration - Connections

Domains

Spool

User Activity 36

Connections 95

IDS Blocks 15

Server Blacklist

Domain Defaults

User Defaults

Impersonate User

Troubleshooting

All Connections 96

SMTP 0

IMAP 3

POP 0

XMPP 0

EAS 91

MAPI/EWS 2

Refresh

Search

<input type="checkbox"/> IP Address ^	Port	Connections	SSL/TLS
<input type="checkbox"/> 24.48.218.187	443	1	✓
<input type="checkbox"/> 52.96.7.197	443	1	✓
<input type="checkbox"/> 52.96.31.93	443	1	✓
<input type="checkbox"/> 52.96.36.253	443	1	✓
<input type="checkbox"/> 66.210.242.255	443	11	✓
<input type="checkbox"/> 67.2.160.228	443	1	✓
<input type="checkbox"/> 68.99.220.107	443	35	✓
<input type="checkbox"/> 68.104.240.183	443	1	✓
<input type="checkbox"/> 68.231.96.22	443	1	✓
<input type="checkbox"/> 70.171.251.126	443	1	✓

10 Rows

1 of 4

≡

⚙

Administrators

Antispam

Antivirus

Bindings

Delivery Limits

Events

Gateways / Failover

General

Licensing

Message Archiving

Password Requirements

Protocols

Security

System Messages

API Documentation

Diagnostic

Save

Cancel

POP

POP Banner
POP3 server ready

Command Timeout (Minutes) *
5

Max Bad Commands *
8

Max Connections (0 = Unlimited) *
200

Max POP Retrieval Threads *
15

POP Retrieval Interval (Minutes) *
10

☒ Enable IDLE Command

IMAP

IMAP Banner
IMAP4rev1 SmarterMail

Command Timeout (Minutes) *
30

Max Bad Commands *
8

Max Connections (0 = Unlimited) *
1000

Max IMAP Retrieval Threads *
15

IMAP Retrieval Interval (Minutes) *
10

SMTP In

Changing the "Allow Relay" setting to "Anyone" or "Only Local Domains" can potentially cause your server to become an open relay server.

SMTP Banner
#HostName#

Allow Relay
Nobody

Session Timeout (Minutes) *
15

Command Timeout (Seconds) *
120

Max Bad Commands *
8

Max Connections (0 = Unlimited) *
200

Max Hop Count *
20

Max Message Size (KB) (0 = Unlimited) *
0

Max Bad Recipients (0 = Unlimited) *
2

Append Received Line
All Inbound Messages

Require Auth Match
Email Address

Max Messages Per Session (0 = Unlimited) *
0

☐ Enable VRFY Command

☐ Enable EXPN Command

☒ Enable Delivery Status Notifications (DSN)

☒ Allow relay for authenticated users

☒ Enable domain's SMTP auth setting for local deliveries

☐ Disable AUTH LOGIN method for non-SSL SMTP authentication

SMTP Out

Outbound IPv4
Use the Domain's IP

Outbound IPv6
Disable

☒ Use primary IP if selections are unavailable

Command Timeout (Seconds) *
60

Max Spam Check Threads *
30

Max Delivery Threads *
50

Max Recipients Per SMTP Session *
500

☒ Enable DNS caching

☒ Enable TLS if supported by the remote server

☐ Append X-SmarterMail-Authenticated-As Header

☒ Disable Remote Bounces

☐ Bypass certificate validation checks (Dangerous)

LDAP (Enterprise Only)

Session Timeout (Seconds) *
300

Command Timeout (Seconds) *
120

XMPP (Enterprise Only)

Max Connections (0 = Unlimited) *
1000

Security Protocols

Use System Defaults to allow the operating system to choose the best protocol to use and to block protocols that are not secure.

☒ System Defaults

☐ SSL 3.0

☐ TLS 1.0

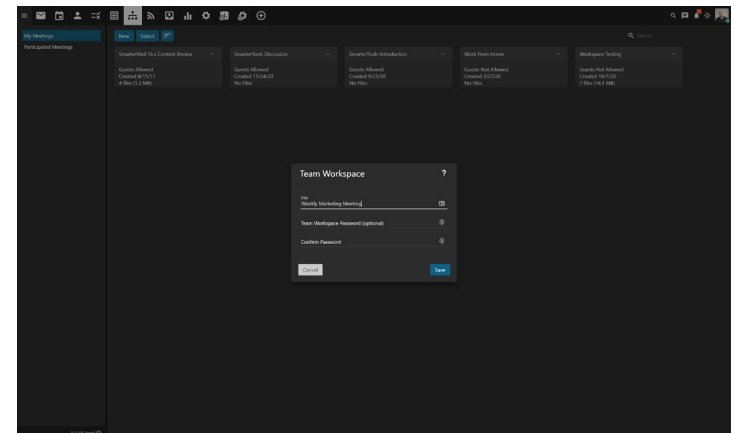
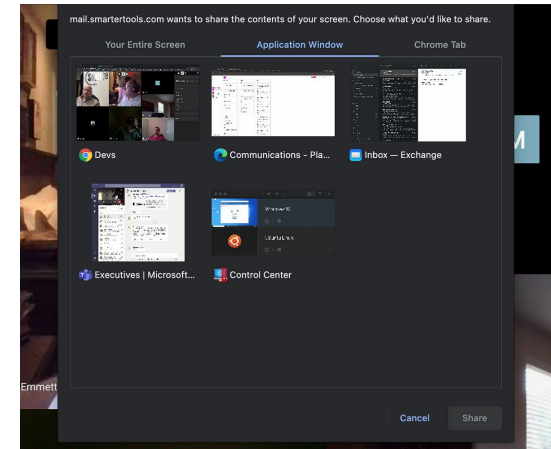
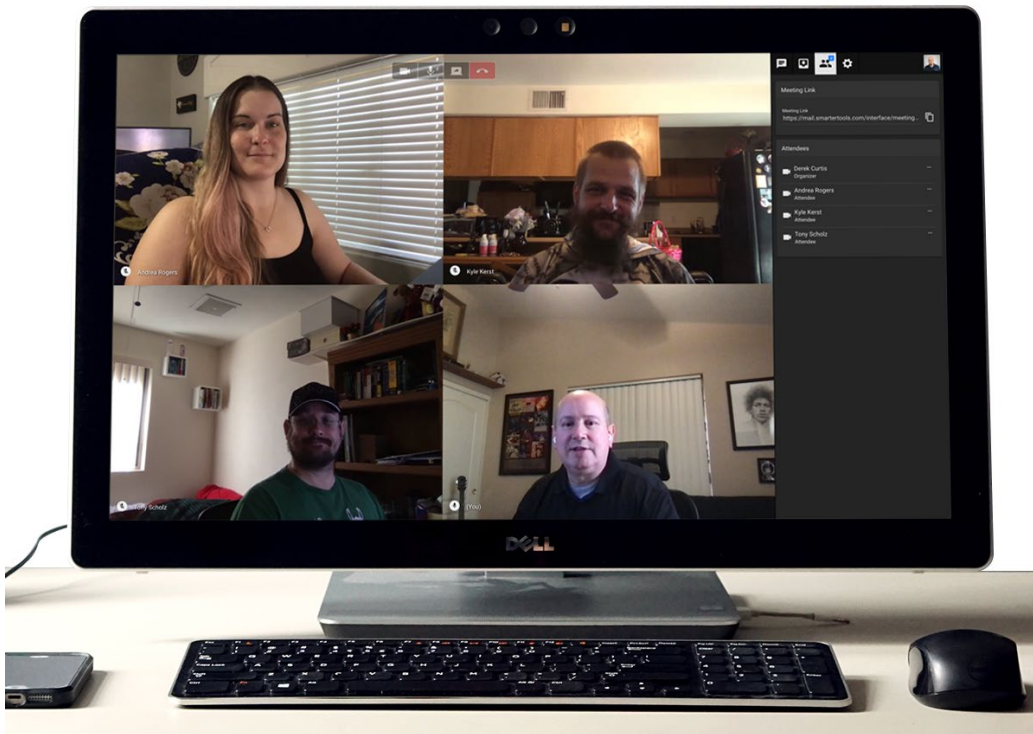
☐ TLS 1.1

☐ TLS 1.2

The screenshot displays a Gantt chart for a project scheduled in April 2021. The interface includes a top navigation bar with 'Previous', 'Next', and 'Today' buttons, and a left sidebar with a navigation menu. The main area shows a timeline from Sunday, April 4, to Sunday, April 25. Tasks are represented as horizontal bars, color-coded by category: yellow for Project Management, blue for Development, green for Testing, and red for Deployment. Key tasks include 'Project Kick-off', 'Requirements Gathering', 'UI/UX Design', 'Frontend Development', 'Backend Development', 'Database Design', 'Integration Testing', 'User Acceptance Testing', and 'Deployment Planning'. The chart also shows dependencies between tasks, indicated by arrows. The bottom status bar shows the current date as 'April 2021' and a '100%' zoom level.

[illegible]

Team Workspaces





Clients and Protocols

Windows Desktop Clients

Feature	Outlook 2019	Outlook 2016	eM Client***	Windows Mail*
Email Folders	MAPI	MAPI	EWS	EAS
Contacts	MAPI	MAPI	EWS	EAS
GAL**	MAPI	MAPI	EWS	EAS
Primary Calendar	MAPI	MAPI	EWS	EAS
Secondary Calendar	MAPI	MAPI	EWS	EAS
Tasks	MAPI	MAPI	EWS	n/a
Notes	MAPI	n/a	EWS	n/a
Shared Folders	MAPI	MAPI	EWS	IMAP
Shared Contacts	MAPI	MAPI	EWS	n/a
Shared Calendars	MAPI	MAPI	EWS	n/a
Shared Tasks	MAPI	MAPI	EWS	n/a
Shared Notes	MAPI	MAPI	EWS	n/a
Room Scheduling	MAPI	MAPI	EWS	n/a
Synched Categories	MAPI	MAPI	n/a	n/a
Autodiscover	MAPI	MAPI	EWS	EAS

*Includes People and Calendar applications for Windows 10

**GAL works on search and/or autocomplete only

***Some features require a Pro license



Clients and Protocols

MacOS Desktop Clients

Feature	Outlook 2019	Mac Mail*
Email Folders	EWS	EWS
Contacts	EWS	EWS
GAL	EWS	EWS
Primary Calendar	EWS	EWS
Secondary Calendar	EWS	EWS
Tasks	EWS	n/a
Notes	EWS	EWS
Shared Folders	EWS	n/a
Shared Contacts	EWS	n/a
Shared Calendars	EWS	n/a
Shared Tasks	EWS	n/a
Shared Notes	EWS	n/a
Domain Calendars	EWS	n/a
Synced Categories	EWS	n/a
Autodiscover	EWS	EWS

*Includes Calendar, Contacts and Notes applications for MacOS



Clients and Protocols

Mobile Clients

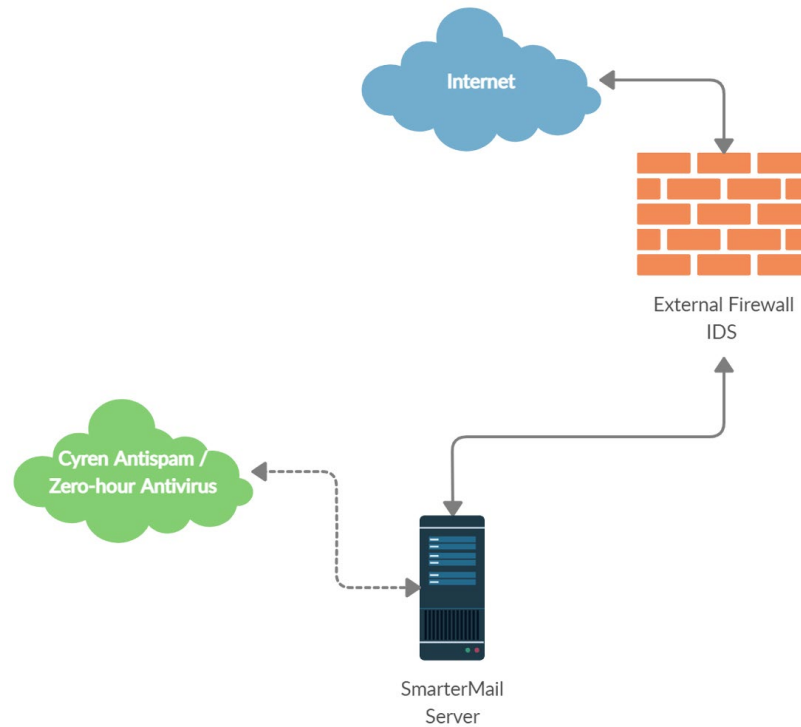
Feature	iOS Mail*	Gmail (Android)	Samsung Mail**	Outlook (iOS/Android)
Email Folders	EAS	EAS	EAS	EAS
Contacts	EAS	EAS	EAS	EAS
GAL	EAS	EAS	EAS	EAS
Primary Calendar	EAS	EAS	EAS	EAS
Secondary Calendar	EAS	EAS	EAS	EAS
Tasks	EAS	n/a	EAS	n/a
Notes	EAS	n/a	n/a	n/a
Shared Folders	EAS	EAS	EAS	EAS
Shared Contacts	EAS	n/a	EAS	n/a
Shared Calendars	EAS	EAS	n/a	n/a
Shared Tasks	EAS	n/a	EAS	n/a
Shared Notes	EAS	n/a	n/a	n/a
Domain Calendars	n/a	n/a	n/a	n/a
Synced Categories	n/a	n/a	EAS	n/a
Autodiscover	EAS	n/a	EAS	EAS

*Includes iOS Calendar, Contacts, Reminders and Notes apps

**Includes Samsung Calendar and Contacts apps

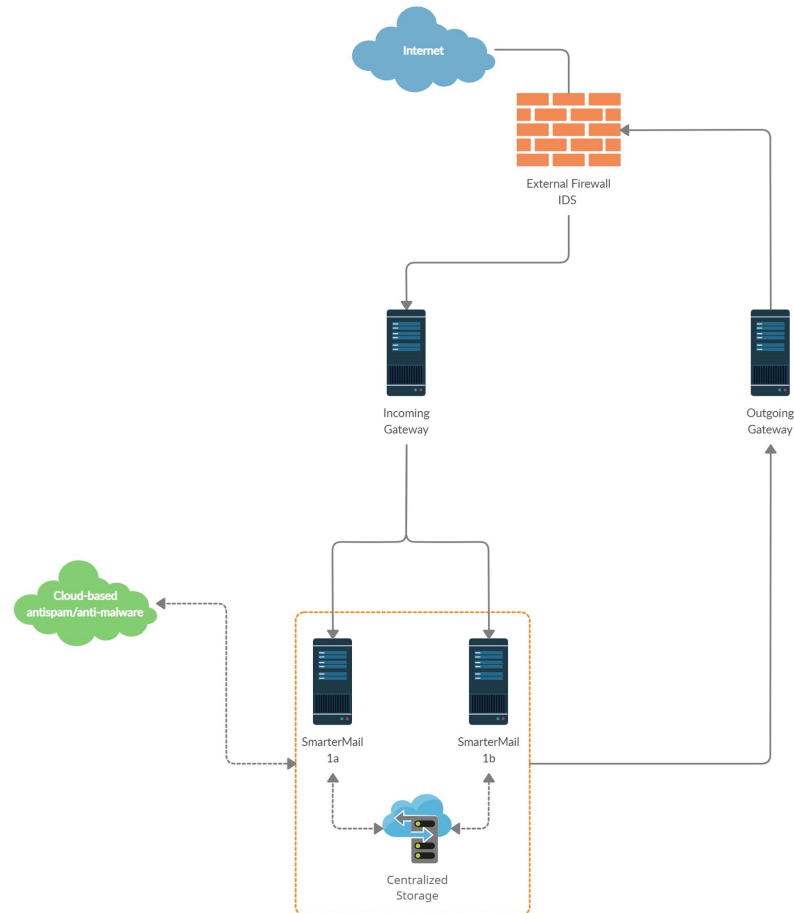


Basic Enterprise Deployment



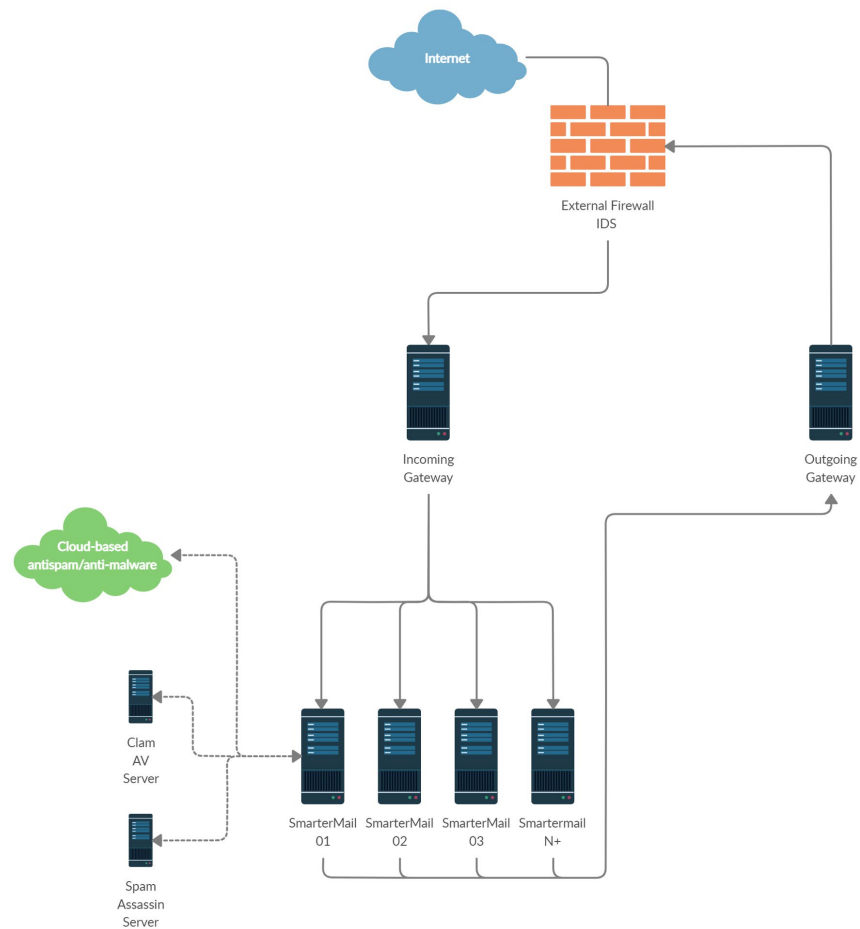


Failover Deployment





ISP/Hosting Deployment



Distribute Responsibility

System Administrator  Domain Administrator  SmarterMail End User

Folder Auto-Clean

☐ Allow domains to override auto-clean settings

☐ Allow users to auto-clean Inbox

+ New Rule

Junk Email
Remove over 730 days in folder

Folder Auto-Clean

☒ Allow users to override auto-clean settings

☒ Override auto-clean settings

+ New Rule

Deleted Items
Remove over 365 days in folder

Folder Auto-Clean

☒ Override auto-clean settings

+ New Rule

Deleted Items
Remove over 15 days in folder

Junk Email
Remove over 5 days in folder



Monetizing Email with SmarterMail

Feature-based email plans

- Most features can be turned on or off at the domain and/or user level

Basic Plan

POP/IMAP
500GB Disk
Basic Antispam
Basic Antivirus

Business Plan

MAPI/EWS/POP/IMAP
1TB Disk
Basic Antispam
Cyren Antispam
File Storage
Group Chat

Enterprise Plan

MAPI/EWS/POP/IMAP/EAS
5TB Disk
Basic Antispam
Cyren Antispam
Cyren Zero-hour
File Storage
Group Chat
Team Workspaces
AD / LDAP



Future of Microsoft Exchange

- Exchange on-premise is ending
- Recent Exchange vulnerabilities (where's their focus?)
- New Microsoft clients (One Outlook / Project Monarch)
 - ❖ Good alternative clients out there (eM Client)
- Accompli acquisition and its implications
- Microsoft wants everyone's email – O365, Outlook users, third-party email servers, Gmail, etc.
 - ❖ How will they use the data they get?



Questions and Answers